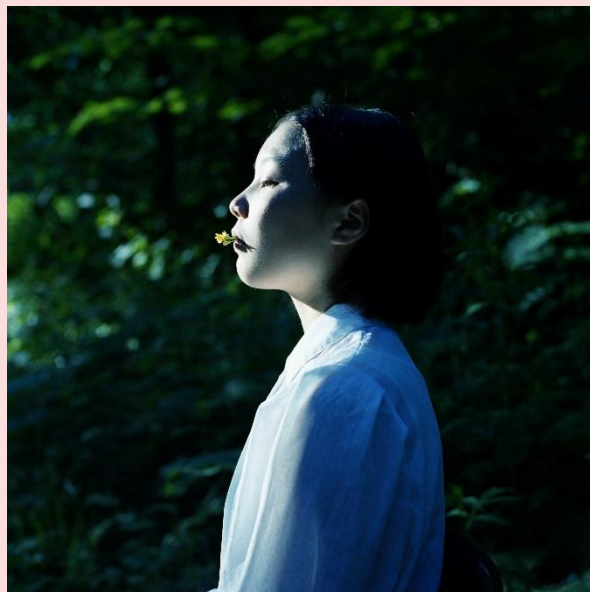


TOP 30th Anniversary TOP Collection: Continuity and Change April 5 – June 22, 2025



Left: Ueda Shoji, from the series *Landscape Vision* 1970-80 Gelatin silver print Right: Yamamoto Ayaka, *Untitled #168*, Hokkaido, Japan, from the series *We are Made of Grass, Soil, Trees, and Flowers*, 2015, Chromogenic print

The Tokyo Photographic Art Museum is pleased to present a TOP Collection exhibition commemorating the 30th anniversary of our opening. Five curators collaborated on this omnibus-format exhibition, which brings together carefully selected works from our collection to offer multiple perspectives on the media of photography and film.

The exhibition title, *Continuity and Change*, is a translation of the phrase *fueki ryuko*, derived from a description by the haiku poet Matsuo Basho (1644–1694) of the essential mindset for haiku. His words – “Without knowing continuity, foundations cannot be established; without knowing change, new winds will not arise” – serve as a guiding principle for engaging with art even today. Embracing the spirit of continuity and change, this exhibition seeks to deepen our understanding of art of the past and its relevance to the present day while remaining attuned to contemporary creative practices and cultural currents. In five thematic sections, it presents works in the collection, from the 19th and 20th centuries to the present, for your interpretation.

There are no single ways to interpret these works, nor definite answers to the questions they raise. We hope that each visitor will derive their own discoveries and insights from the works and share them, enriching their viewing experience in the process.

Exhibiting Artists |

Jacques-Henri Lartigue, August Sander, Shimooka Renjo, Felice Beato, Onodera Yuki, Yamamoto Ayaka, Ishiuchi Miyako, Shiozaki Yumiko, Katayama Mari, Otsuka Chino, Dorothea Lange, Hayashi Tadahiko, Enari Tsuneo, Hishida Yusuke, Ueda Shoji, Yamagami Shinpei, Sugimoto Hiroshi, Akasegawa Genpei, Tamura Akihide, Nagano Shigeich, Ushioda Tokuko, Kikai Hiroo, Seto Masato, Onishi Mitsugu, Araki Nobuyoshi, Yamazaki Hiroshi, Nakano Masataka, Sanai Masafumi, Sawada Tomoko, Nagashima Yurie, Noguchi Rika, Sugiura Kunie, Furuhashi Teiji and others

[Room 1] Pictures of Women –Focus on Early Photography (curated by Sato Mamiko)

Room 1 presents photographs of women dating from the advent of photography through the early 20th century, with a focus on the early years of photography. This period also saw the first wave of women’s rights activism in various countries. Here, we seek to reveal subtle forms of “resistance” by women who, while appearing to conform to others’ expectations, sought to be portrayed as they wished to see themselves.



1-1



1-2



1-3



1-4

1-1: Shimooka Renjo, *(Two women holding hands)*, c.1863-1876, Albumen Print 1-2: Felice Beato, *Japanese Woman with an umbrella*, c.1863-1877, Hand-colored albumen print 1-3: Okubo Koroku, *Miss Toyoko*, 1926, Bromoil print 1-4: Jacques-Henri Lartigue, *Suzanne Lenglen Training, Nice*, 1921, Gelatin silver print

[Room 2] Side by Side (curated by Osaki Chino)

Room 2 features the works by Otsuka Chino, Katayama Mari, Shiozaki Yumiko, and Ishiuchi Miyako with the theme of “side by side.” Through their works, we explore how these artists have lived with pain and anxiety by confronting their own emotions and connecting with others, offering diverse vantage points on what it means to stand side by side.



2-1



2-2



2-3



2-4

2-1 : Otsuka Chino, *1982 and 2005, Paris, France* from the series *Imagine Finding Me*, 2005 2-2 : Katayama Mari, *I'm wearing little high heel*, 2011 2-3 : Shiozaki Yumiko, *Una* 2008 from the series *UNA*, 2008 2-4 : Ishiuchi Miyako, *#52* from the series *mother's*, 2003

[Room 3] The Age of Movement (curated by Muroi Momo)

The 20th century saw a dizzying expansion of human activity by air, land, and into outer space, making it truly an “age of movement.” Room 3 examines this theme of “movement”, tracing the close and complex relationship between people and mobility during the 20th century. Photographs documenting these movements serve as vivid historical records, powerfully conveying the emotions of those who lived through these times.



3-1



3-2



3-3

3-1: Alfred Stieglitz, *The Steerage*, 1907 3-2: Lewis W. Hine, *Climbing into America, Ellis Island*, 1908 3-3: Hayashi Tadahiko, *Demobilized soldiers (Shinagawa Station)*, from the series *Kasutori Jidai (Days in the Dregs)*, 1946

[Room 4] Listening to Photographs (curated by Yamazaki Kaho)

Unlike modes of representation such as literature or painting, photography requires three-dimensional spaces and tangible subjects. Beyond the images framed by the camera lens, there exist, or once existed, real spaces where Room 4 presents photographs that evoke “sound”. In the spaces depicted, sound was once heard, and as we engage with the images it re-emerges in our minds,

inferred from our personal experiences. Photography, while silent, can serve to unlock these imagined sounds.



4-1



4-2



4-3



4-4

4-1: Akiyama Ryoji, *T.V. Frame Left in a Reclamation Area, Tokyo* from the series *Scrap Land*, 1969 4-2: Takanashi Yutaka, *Nezu, Yanaka: Isego Main Store, 4-2-39 Yanaka, Taito-ku* from the series *Machi*, 1977 4-3: Nancy Lee Katz, *Sir Colin Davis* from the series *Pantheon*, 2002 4-4: Yamagami Shinpei, from the series *Epiphany*, 2020

[Room 5] Utsuroi (Transience) –From Showa to Heisei

Thirty years have passed since the Tokyo Photographic Art Museum opened in 1995. Room 5 explores photography from the end of the Showa (1926-1989) and the beginning of the Heisei (1989-2019) era, placing it in historical context. *TOKYO/City of Photos*, one of the exhibitions marking the museum's opening, captured urban landscapes and daily life from various artists' perspectives, conveying the coexistence of the old and the new. The 1990s also saw the rise of female artists and emerging talents who represented the next generation in photography and the moving image. We look back at the world 30 years ago, when the Tokyo Photographic Art Museum first opened its doors.



5-1

5-1: Nakano Masataka, *Udagawa-cho, Shibuya-ku, Jan. 1991* from the series *TOKYO NOBODY*, 1991 5-2: Araki Nobuyoshi, from the series *Winter Journey*, 1990 5-3: Tamura Akihide, *Rainbow Bridge* from the series *Wangan*, 1992



5-2



5-3

Outline of exhibition |

Exhibition Title: TOP 30th anniversary TOP Collection: Continuity and Change

Dates: April 5 – June 22, 2025

Closed: Mondays (except when May 5), May 7

Venue: 3F Exhibition Gallery, Tokyo Photographic Art Museum

Yebisu Garden Place, 1-13-3 Mita Meguro-ku Tokyo 153-0062

Open Hours: 10:00–18:00 (Thu. / Fri. 10:00–20:00) *Final admission 30 minutes before closing.

Admission : Adults ¥700/ College Students ¥560 / High School Students, Over 65 ¥350

*Admission is free for junior high school students or younger, holders of Japanese disability identification cards (shogaisha techo), along with up to two caregivers, and holders of the museum's annual passport.

Organized by: Tokyo Metropolitan Government, Tokyo Photographic Art Museum operated by Tokyo Metropolitan Foundation for History and Culture

Supported by: J-WAVE 81.3FM

For Press |

If you have any press enquiries about this Exhibition, please contact our Department of Public Relations.

High-resolution images for publication are also available by e-mail.

press-info@topmuseum.jp

<https://topmuseum.jp/e/contents/index.html>