

TOP MUSEUM

東京都写真美術館
TOKYO PHOTOGRAPHIC ART MUSEUM

153-0062 東京都目黒区三田1-13-3 恵比寿ガーデンプレイス内
Yebisu Garden Place, 1-13-3 Mita Meguro-ku Tokyo 153-0062
TEL 03-3280-0099 FAX 03-3280-0033
www.topmuseum.jp

Revolution 9: Homma Takashi

Oct. 6, 2023 – Jan. 21, 2024



New York from the series *THE NARCISSISTIC CITY* 2013
©Takashi Homma Courtesy of TARO NASU

Homma Takashi (born in Tokyo in 1962) received the 24th Kimura Ihei Award for his photo book *Tokyo Suburbia* (published by Korinsha) in 1999. The work was highly acclaimed for Homma's way of maintaining a certain distance from his subjects – people and landscapes in the suburbs of Tokyo that were in the process of being developed – and a perspective that was free of lyricism.

In 2011 and 2012, Homma staged a large-scale solo show called *New Documentary*, which traveled to three museums in Japan. The exhibition consisted of both old and new works, providing an expansive overview of the artist's photographs and videos. These included his early work for publications such as the cultural magazine *i-D*; *Tokyo and My Daughter*, a work that focused on scenes of Tokyo and a young girl growing up in the ever-changing city; and a video work based on the photographer Nakahira Takuma.

This exhibition, Homma's first solo show at a Japanese museum in some ten years, focuses on series such as *The Narcissistic City*, which the artist has described as an attempt to "use the city to shoot the city" by shooting cities around the world using rooms as if they were pinhole cameras. The light that streams into through a small hole, open to the outside, spontaneously captures inverted urban landscapes inside the pitch-black room.

Improvisation is one of the keywords in the exhibition. Homma is currently interested incorporating chance into his works and exhibitions, and the English title of this exhibition, *Revolution 9* (the letters of which also appear in one of the works on display), serves as an homage to the famous song of the same name by the English rock band the Beatles. The collage-like piece was made by combining a variety of sound sources.

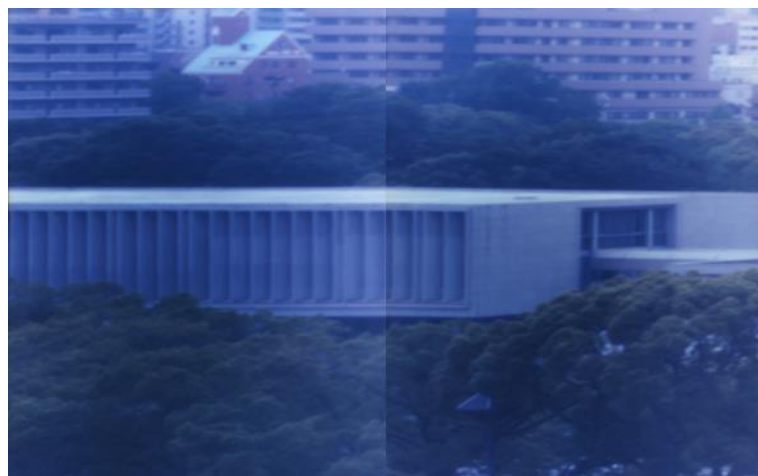
The exhibition traces Homma's radical approaches to photographic and video expression to the present day by introducing his works from the last decade.



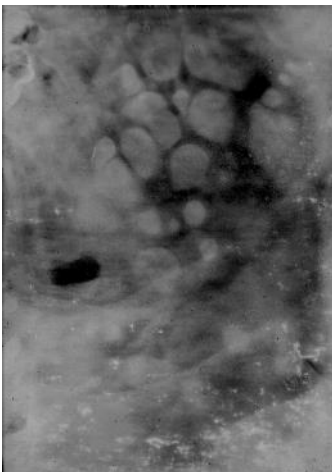
1



2



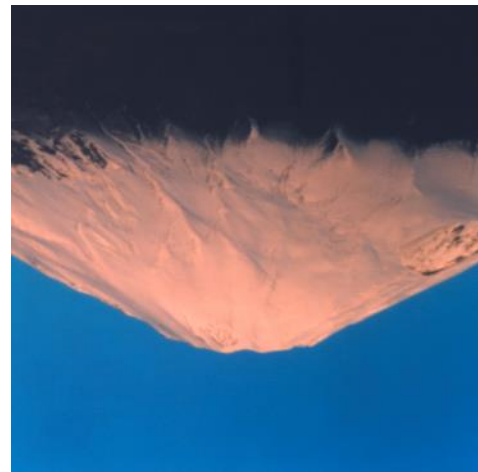
3



4



5



6

- [1] *Revolution* from the series *The Narcissistic City* 2013
- [2] *New York* from the series *The Narcissistic City* 2013
- [3] *Hiroshima Peace Memorial Museum* from the series *The Narcissistic City* 2013
- [4] *abstract 1* 2014
- [5] *No.9* from the series *The Narcissistic City* 2015
- [6] *mount FUJI 9/36* from the series *Thirty-Six Views of Mount Fuji* 2016

*All Works ©Takashi Homma Courtesy of TARO NASU

Outline of exhibition |

Dates: Oct. 6, 2023 – Jan. 21, 2024

Closed: Mondays (except when Monday falls on a holiday, in which case the museum is open and closed the following day) and New Year's holidays (12/29-1/1)

Venue: 2F Exhibition Gallery, Tokyo Photographic Art Museum
〒153-0062 Yebisu Garden Place, 1-13-3 Mita Meguro-ku Tokyo 153-0062

Open Hours: 10:00–18:00 (Thu. / Fri. 10:00–20:00)

*Final admission 30 minutes before closing.

Admission : Adults ¥700/ College Students ¥560 / High School and Junior High School Students, Over 65 ¥350

*Admission is free for children in elementary school or younger; junior high school students living or attending schools in the Tokyo metropolitan area; holders of Japanese disability identification cards (shogaisha techo), along with up to two caregivers; and holders of the museum's annual passport.

Organized by: Tokyo Metropolitan Government, Tokyo Photographic Art Museum operated by Tokyo Metropolitan Foundation for History and Culture

For Press |

If you have any press enquiries about this Exhibition, please contact our Department of Public Relations.

High-resolution images for publication are also available by e-mail.

press-info@topmuseum.jp

<https://topmuseum.jp/e/contents/index.html>