

Japanese Expanded Cinema Revisited

Tuesday, August 15 to Sunday, October 15, 2017

About

Tokyo Photographic Art Museum is pleased to announce the exhibition “Japanese Expanded Cinema Revisited”.

Centered around the museum’s collection, this exhibition will concentrate on works that employ methods or forms other than conventional movie theater projection to consider the ‘Expanded Cinema’ concept that was developed from the mid-sixties onwards by artists and experimental filmmakers based largely in Europe and the U.S.A. Japan was quick to carry out experiments in ‘Expanded Cinema’ from around the 1960s, and we will focus on Japanese film history to reconsider its uniqueness and foresight. The results of this trend are now familiar to us all through multi-projection, loop projection and live performances, but it also responded to the intermedia or art and technology that flourished during the same period, rediscovering the diversity that always existed in film. More than fifty years have now passed since the birth of this movement and we hope that by re-exploring ‘Expanded Cinema’ we will be able to trace the transition and contemporariness of imagery from the earliest times up to the present day.



Artists/ Works (13 works, 110 related materials)

Matsumoto Toshio

For the Damaged Right Eye

1968 Single-channel video, transferred from three 16mm color films,
B&W, part colour, sound, 13 min. Music: Akiyama Kuniharu

Shūzō Azuchi Gulliver

Watch

1966-67 Single-channel video, transferred from a 16mm film, B&W, silent

Iimura Takahiko

Dead Movie

1964 Film installation, 16mm film, B&W, silent

Collection of the artist

Iimura Takahiko

A Dance Party in the Kingdom of Lilliput

1964 / 1966 Double projection, 16mm film, B&W, sound, 12 min.

Collection of the artist

Shūzō Azuchi Gulliver

Cinematic Illumination

1968-69 Intermedia work

1440 slide films, 18 slide projectors, B&W, colour, sound (only for this exhibition)

Music supervision: Tachikawa Naoki

Ōe Masanori

Loop Siki No.1 / No.2 / No.3

1966 Film installation, 16mm film, B&W, sound, loop

Collection of the artist

Manabe Hiroshi

Marine Snow

1960 Single-channel video, transferred from a 16mm film, B&W, sound, 22 min.

Collection of The Museum of Art, EHIME

Jōnouchi Motoharu

Document 6.15

1961 Single-channel video, transferred from a 16mm film, B&W, silent, 18 min.

Jōnouchi Motoharu

Shinjuku Station

1974 Single-channel video, transferred from a 16mm film, B&W, sound, 16 min.

Sasaki Michiko

To Die Sometime

1974 Single-channel video, transferred from a 16mm film, B&W, sound, 30 min.

Collection of the artist

Matsumoto Toshio

Space Projection Ako

1970 Single-channel video, transferred from a 16mm film, colour, sound, 15 min.

Music: Yuasa Jōji

Kanesaka Kenji

Hopscotch

1967 Single-channel video, transferred from a 16mm film, B&W, sound, 10 min.

Collection of the Harvard Film Archive

Jud Yalkut

EXPO '67 (excerpt from 'METAMEDIA')

1967 Single-channel video, transferred from a 16mm film, colour, sound, 4 min.

Collection of Anthology Film Archives

Thanks to the Estate of Jud Yalkut

For more detail, please see "List of Works/ Related Materials."

All works not otherwise designated are from Tokyo Photographic Art Museum.

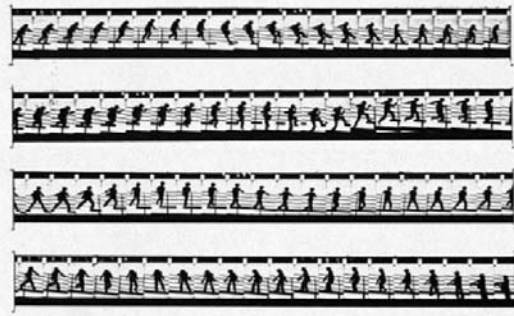
Works



1



2



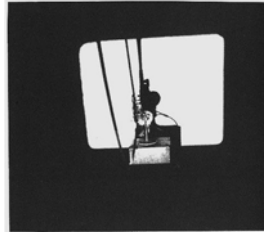
3



4



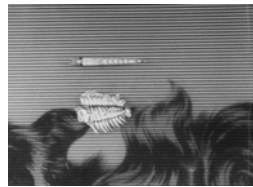
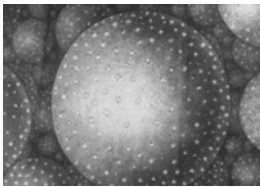
5



6



7



8



9



10



11

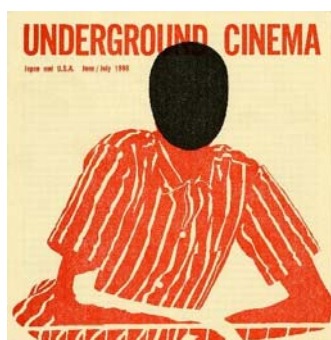


12



13

Related Materials.



14



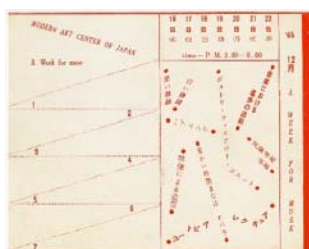
15



16



17



18



19

1 Matsumoto Toshio *For the Damaged Right Eye* 1968 Single-channel video, transferred from three 16mm color films, B&W, part colour, sound, 13 min. Music: Akiyama Kuniharu

2 Matsumoto Toshio *Space Projection Ako* 1970 Single-channel video, transferred from a 16mm film, colour, sound, 15 min. Music: Yuasa Jōji

3 Shūzō Azuchi Gulliver *Cinematic Illumination* 1968-69 Intermedia work 1440 slide films, 18 slide projectors, B&W, colour, sound (only for this exhibition) Music supervision: Tachikawa Naoki

4 Shūzō Azuchi Gulliver *Watch* 1966-67 Single-channel video, transferred from a 16mm film, B&W, silent

5 Iimura Takahiko *A Dance Party in the Kingdom of Lilliput* 1964/1966 Double projection, 16mm film, B&W, sound, 12 min. Collection of the artist

6 Iimura Takahiko *Dead Movie* 1964 Film installation, 16mm film, B&W, silent Collection of the artist

7 Ōe Masanori *Loop Siki No.1 / No.2 / No.3* 1966 Film installation, 16mm film, B&W, sound, loop Collection of the artist

8 Manabe Hiroshi *Marine Snow* 1960 Single-channel video, transferred from a 16mm film, B&W, sound, 22 min. Collection of The Museum of Art, EHIME

9 Jōnouchi Motoharu *Document 6.15* 1961 Single-channel video, transferred from a 16mm film, B&W, silent, 18 min.

10 Jōnouchi Motoharu *Shinjuku Station* 1974 Single-channel video, transferred from a 16mm film, B&W, sound, 16 min.

11 Sasaki Michiko *To Die Sometime* 1974 Single-channel video, transferred from a 16mm film, B&W, sound, 30 min. Collection of the artist

12 Kanesaka Kenji *Hopscotch* 1967 Single-channel video, transferred from a 16mm film, B&W, sound, 10 min. Collection of the Harvard Film Archive

13 Jud Yalkut *EXPO '67 (excerpt from 'METAMEDIA')* 1967 Single-channel video, transferred from a 16mm film, colour, sound, 4 min. Collection of Anthology Film Archives Thanks to the Estate of Jud Yalkut

14 Leaflet for 'Underground Cinema' (Design: Hosoya Gan) Collection of SŌGETSU FOUNDATION (Held by Keio University Art Center) 1966

15 Poster for 'EXPOSE 1968: Henshin Aruiwa Gendageijutsu no Kareinaru Bouken' (Design: Awazu Kiyoshi) Collection of SŌGETSU FOUNDATION (Held by Keio University Art Center) 1968

16 Photo of Gewaltopia Yokokuhen (Gewaltopia Trailer) Photo: Sasaki Michiko Collection of the artist 1969

17 Bulletin of 'MAC•J, No.2' 1965 Illustration: Adachi Masao Private Collection

18 Leaflet for 'A Week for Muse' Private Collection 1965

19 Newsreel Japan, Vol.1 No.1 1969 Private collection

Exhibition catalogue

Essays:

Japanese Expanded Cinema Revisited Tasaka Hiroko

Politics, the Street, and the Expansion into Everyday Life Hirasawa Gō

Explorers of Boundaries: 1960-70s Expanded Cinema in Japan Julian Ross

Published by:

Tokyo Photographic Art Museum

Tokyo Metropolitan Foundation for History and Culture

¥2,052

Events

Artist Talks (in Japanese)

Iimura Takahiko

August. 19 (Sat) 14:00-15:30

Ōe Masanori

August. 20 (Sun) 14:00-15:30

Shūzō Azuchi Gulliver

August. 26 (Sat) 14:00-15:30

Gallery Talks (in Japanese)

Aug. 25, Sep. 8, Sep. 22, Oct. 13 from 4:00 pm

This exhibition is

Organized by Tokyo Metropolitan Government / Tokyo Photographic Art Museum

Sponsored by Toppan Printing Inc.

Venue: B1 Floor Gallery, Tokyo Photographic Art Museum

Museum Hours: 10:00-18:00(10:00 – 20:00 on Thursday and Friday) From July 20 – August 25, open until 21:00 on Thursdays and Fridays. ※Last entry 30 minutes before closing

Closed : Monday (if Monday is a national holiday or a substitute holiday, it is the next day)

Admission : Adult ¥ 600 (¥480) Students ¥500 (¥400) Junior & senior high school students, people aged 65 or over: ¥400 (¥320) ※()for group over 20 people

For Further Information

Curator Tasaka Hiroko h.tasaka@topmuseum.jp

Endo Miyuki m.endo@topmuseum.jp

Press Kushiro Akiko, Hirasawa Ayano, Maehara Takako

press-info@topmuseum.jp

Tokyo Photographic Art Museum

1-13-3 Mita, Meguro-ku, 153-0062, Tokyo, Japan

Tel 03-3280-0034 Fax 03-3280-0033 <http://topmuseum.jp>