

2023/4/1

## TOP Collection: Serendipity Wondrous Discoveries in Daily Life Apr. 7, 2023 – Jul. 9, 2023



Nara Yoshitomo, *NY Drawing* (left); *Yogyakarta Cat* (right) from the series *days 2003-2012*, 2003–2012, Collection of Tokyo Photographic Art Museum, ©Yoshitomo Nara

At the Tokyo Photographic Art Museum, we present collection exhibitions based on a variety of themes, and examine the works in our holdings from a diverse range of perspectives. The theme of this edition is “serendipity.” This word, derived from a Persian fairytale, means to have a gift or luck to accidentally make unexpected discoveries.

Maybe you have had an experience like this. For example, you come across a picture postcard that you find moving or soothing, so you decide to stick it on your wall or carefully keep it in a notebook. Or as you are looking back at a bunch of photographs you took, you suddenly discover a link between two of them that transcends place and time. These are perfect examples of serendipity. And the act of viewing an exhibition is another serendipitous experience that is filled with encounters with unexpected events.

In this exhibition, drawn from the museum’s collection of over 37,000 items, we introduce works that capture an ordinary moment in everyday life, while exploring the delicate workings of the photographers’ hearts. Although we sometimes experience different kinds of painful and difficult events for short periods over many years, we may be able to return to the state of healing or emotional richness achieved through serendipity by understanding the viewpoints of these photographers.

## Exhibition Summary



### Quiet Gazes, Contented Times

For the past few years we are not free to travel in search of worlds that differ from our familiar ones. However, even the mundane world of the everyday can be filled with a wealth of insights if we shift our perspectives just a little. Discoveries of things that have been right there all the time without our awareness come at unexpected times, and this is the phenomenon of serendipity. With such discoveries, we can live in a smaller world without having it become a closed-off one.

Artist: Yoshino Erika, Gocho Shigeo, Kitai Kazuo, Shimaō Shinzo, Ushioda Tokuko, Imai Tomoki



Yoshino Erika, from the series *JOBIM*, 2022, Collection of the artist



Gocho Shigeo, from the series *Days*, 1967-1970, Collection of Tokyo Photographic Art Museum



Ushioda Tokuko, *Refrigerator*, 1999, Collection of Tokyo Photographic Art Museum

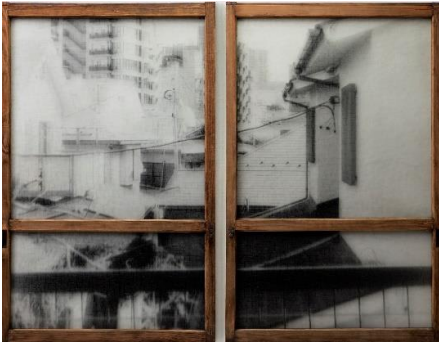


### Scenes Through Windows, or Simply Capturing What is There

The world's oldest surviving photograph, *View from the Window at Le Gras*, was taken by Nicéphore Niépce in early 19th century from the window of his laboratory. However, Niépce was experimenting with various procedures for fixing on a surface, and making an enduring record of, images projected into a dark box, and he was trying not so much to capture the scene outside the window as to document the fact that he had captured it. However, scenery outside a window is something loved by people all over the world, and through the power of serendipity, many have no doubt discovered something in the view through their window that appears by chance.

When we see an image before us we tend to find something in it, and depending on who who sees it, it may unintentionally take on a highly important meaning. Here, let us consider the serendipity that an image, obtained simply by the act of capturing something that is there, can spark in a viewer.

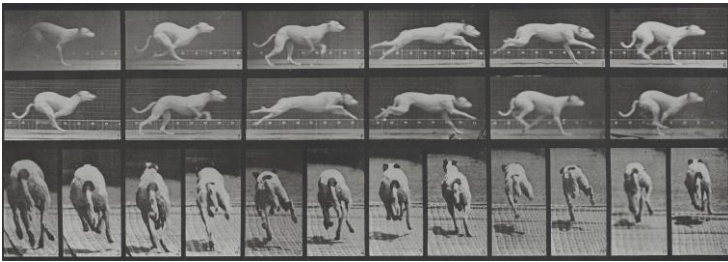
Artist: Suzuki Nozomi, Sanai Masafumi, Casai Hideki, Eadweard Muybridge, Yamazaki Hiroshi, Hamada Ryo, Aikawa Masaru



Suzuki Nozomi, *Windows from the east side of the second floor of the Kakinoki apartment* from the series *Other Days, Other Eyes*, 2016, Collection of Tokyo Photographic Art Museum



Aikawa Masaru, from the series *landscape*, 2019, Collection of Tokyo Photographic Art Museum



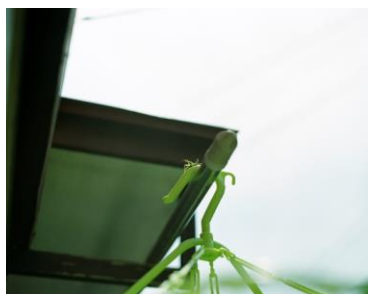
Eadweard Muybridge, *Dog: galloping; white racing hound, Maggie* from the series *Muybridge Plates*, 1887, Collection of Tokyo Photographic Art Museum



### Photographs Side by Side

No matter who is clicking the shutter of a camera, the act is accompanied by some kind of internal impulse. After shooting, photographers select from among the vast number of photos they have taken before they present their works. When looking back through photos in this way, it is possible to see that two of them are connected by some completely unexpected relationship that transcends the time and place they were taken. This is indeed a product of serendipity. When photographs are recombined in this way, in addition to the meanings that individual shots convey, they take on other meanings from different perspectives when juxtaposed, and their richness as works of art is enhanced.

Artist: Nara Yoshitomo, Saito Harumichi, Nakahira Takuma, Elliott Erwitt



Saito Harumichi, from the series *Sensation*, 2011, Collection of Tokyo Photographic Art Museum



Nakahira Takuma, from the series *Everyday Life*, 1990-1996, Collection of Tokyo Photographic Art Museum





## Serendipity in Art

Artists who create extraordinary works of art nonetheless have everyday lives and go about their daily routines. In the midst of their day-to-day lives, serendipity sometimes strikes them and becomes a catalyst for their creations.

Artists: Honjo Naoki, Inoue Sayuki, Ishikawa Naoki, Homma Takashi, Hatakeyama Naoya



Honjo Naoki, *Tokyo, Japan 2005*, from the series *small planet*, 2005, Collection of Tokyo Photographic Art Museum



Ishikawa Naoki, from the series *Mt. Fuji*, 2008, Collection of Tokyo Photographic Art Museum



Homma Takashi, from the series *Tokyo and my Daughter*, 1999-2010, Collection of Tokyo Photographic Art Museum

### **Outline of exhibition |**

Dates: Apr. 7, 2023 – Jul. 9, 2023

Closed: Monday (except May 1)

Venue: 3F Exhibition Gallery, Tokyo Photographic Art Museum

〒153-0062 Yebisu Garden Place, 1-13-3 Mita Meguro-ku Tokyo 153-0062

Open Hours: 10:00–18:00 (20:00 on Thursdays and Fridays)

\*Final admission 30 minutes before closing.

Admission : Adults ¥ 700/ College Students ¥ 560 / High School and Junior High School Students, Over 65 ¥ 350

\*Admission is free for children in elementary school or younger; junior high school students living or attending schools in the Tokyo metropolitan area; holders of Japanese disability identification cards (shogaisha techo), along with up to two caregivers; and holders of the museum's annual passport.

Organized by: Tokyo Metropolitan Government, Tokyo Photographic Art Museum operated by Tokyo Metropolitan Foundation for History and Culture

### **For Press |**

If you have any press enquiries about this Exhibition, please contact our Department of Public Relations.

High-resolution images for publication are also available by e-mail.

press-info@topmuseum.jp

<https://topmuseum.jp/e/contents/index.html>