

2019/02/04

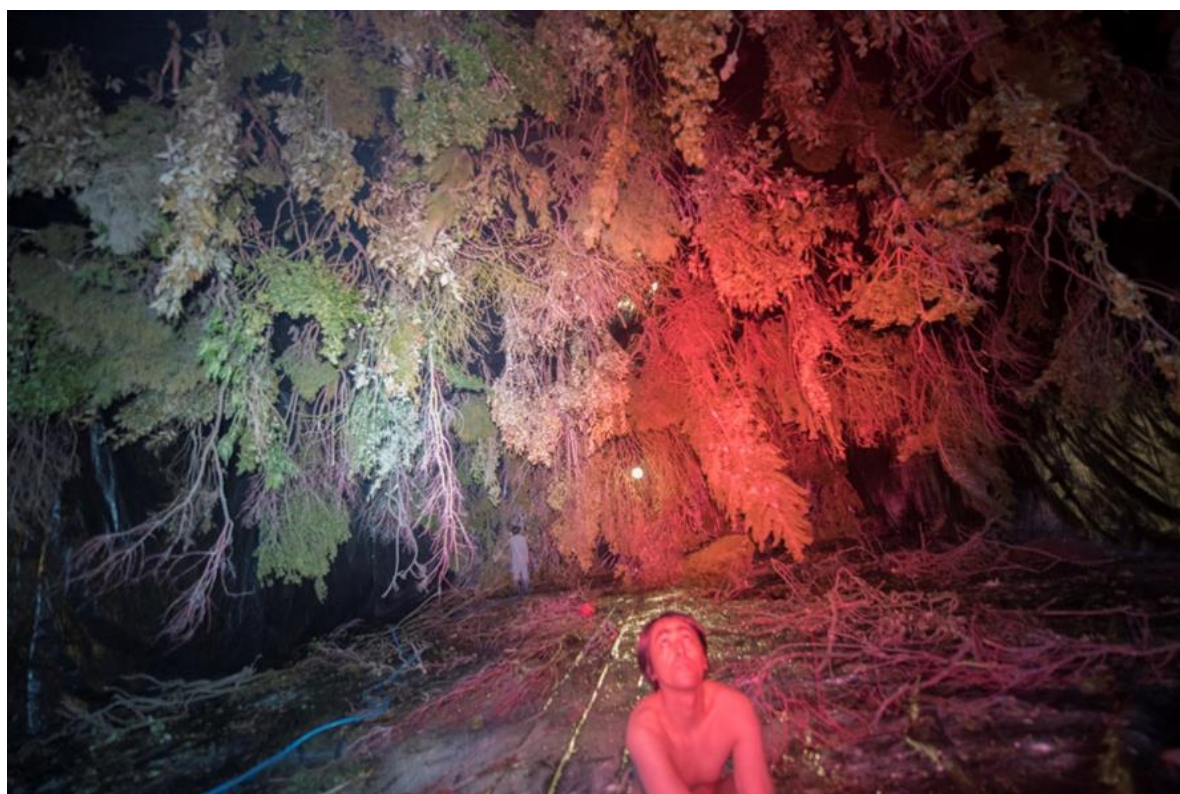
TOP MUSEUM

東京都写真美術館
TOKYO PHOTOGRAPHIC ART MUSEUM

153-0062 東京都目黒区三田1-13-3 恵比寿ガーデンプレイス内
Yebisu Garden Place, 1-13-3 Mita Meguro-ku Tokyo 153-0062
TEL 03-3280-0099 FAX 03-3280-0033
www.topmuseum.jp

Shiga Lieko: Human Spring

Mar. 5—May. 6, 2019



Human Spring, 2018 Collection of the Artist ©Lieko Shiga

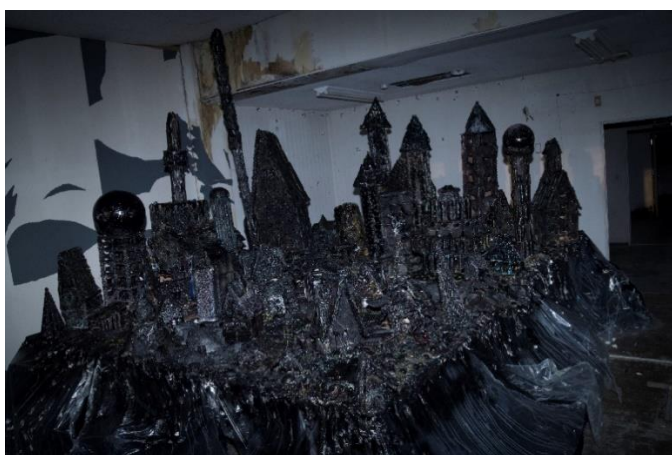
Exhibition Summary

The Tokyo Photographic Art Museum is pleased to present “Human Spring,” a new series of work, based on a unique form of fieldwork, by SHIGA Lieko, a photographer who is attracting increasing attention not only in Japan, but also internationally.

The first time she visited the Tohoku region of Japan was in 2006 to participate in an exhibition there. Later, in 2008, she went to live in Miyagi Prefecture; interacting with the local people as she created her works, she found herself captivated by the way that spring breaks through the long, cold, Tohoku winter. Moved by the fact that the changing seasons not only overflow with the energy of life, but simultaneously embrace death, she realized that this was the origin of mankind’s constant search for diverse images, leading her to delve further into this. She tried to discover how it related to and was connected with human society and it was while she was involved in this, in March 2011, that

the Great East Japan Earthquake struck. She witnessed the horrific sight of large numbers of people being killed in an instant and this experience became etched deeply on her mind. Photographic expressions that appear to jump into the gap that exists between space and time can be said to coincide with her own impulses.

This exhibition focuses on the urges and instincts that lurk in the depths of the hearts of we who live in the present day; created with the cooperation of people of various ages and professions from around Japan, these photographs have been blown up to larger-than-life size and are presented in the form of an installation. With the end of the Heisei era, this spring represents a milestone in Japanese history and we hope that this exhibition will provide the opportunity to close in on spiritual extremes, reweaving the relationships that exist between contemporary society and the individual, or nature and humanity and us to feel the intrinsic power of life.



Human Spring 2018 Collection of the Artist ©Lieko Shiga

Artist Profile

Shiga Lieko

1980 Born in Aichi Prefecture

2004 Graduated in fine art and new media from the Chelsea College of Art and Design, London,

2007-08 Visited London as part of the Agency for Cultural Affairs Program of Overseas Study for Upcoming Artists

Currently lives in Miyagi Prefecture

Main Solo Exhibitions

2001 "Floating Occurrence", graf, Osaka, Japan. March 30 – April 10

2005 "Lilly", graf media gm, Osaka, Japan. May 21 – June 26

2006 "Lilly", NUKE gallery, Paris, France. December 17, 2006 - January 13, 2007

- 2011 “CANARY”, Mitsubishi-Jisho ARTIUM, Fukuoka, Japan. February 19 – March 11
 “CANARY”, Galerie Priska Pasquer, Cologne, Germany. March 24 – July 30
- 2012-13 “Shiga Lieko RASENKAIGAN”, Gallery—4200, 6F Sendai Mediatheque Miyagi,
 Japan. November 7, 2012 – January 14, 2013
- 2017 “Blind Date”, Marugame Genichiro-Inokuma Museum of Contemporary Art, Kagawa,
 Japan. July 10 – September 3

Main Group Exhibitions

- 2004 “Jacques”, (video installation). Shiga Lieko and mai fujinoya, Yamaguchi Center for Arts and Media,
 Yamaguchi, Japan.
- 2005 “Rapt!—20 Contemporary Artists from Japan”, Seventh Gallery, Melbourne, Australia. October 10 –
 November 4
 “Re:search, an Art Collaboration Between Australia and Japan”, Sendai Mediatheque, Sendai, Japan.
 November 26 – December 25
- 2008 “33rd Kimura Ihei Award Winners’ Exhibition”, CANARY/Lilly”, Konica Minolta Plaza, Tokyo, Japan. April
 19 – 28
 “on your body: Contemporary Japanese Photography vol. 7”, Tokyo Metropolitan Museum of
 Photography, Tokyo, Japan. October 18 – December 7
- 2008 “Trace elements spirit and memory in Japanese and Australian photomedia”, Tokyo Opera City Art
 Gallery, Tokyo, Japan. July 19, –October 13
- 2010 “Roppongi Crossing 2010: Can There Be Art? The Creative Potential of a New Japan”, Mori Art
 Museum, Tokyo, Japan. March 20 – July 4
 “New York Photo Festival 2010 "Hidden Books, Hidden Stories", St. Ann’s Warehouse, New York, U.S.A.
 May 12 – 16
 “Aichi Triennale 2010: Arts and Cities”, Aichi Arts Center, Nagoya, Aichi, Japan. August 21– October
 31
 The 3rd International Photobook Festival, Documenta Halle, Kassell, Germany May 13 –16
- 2012 “In Between Journeys: Here I Am”, Takamatsu City Museum of Art, Takamatsu, Kagawa Pref., Japan.
 June 23 – September 2
 “Invisibleness is Visibleness: International Contemporary Art Collection of a Salaryman—Daisuke
 Miyatsu”, Museum of Contemporary Art Taipei, Taiwan. July 9 – September 4
- 2013 “ARTIST FILE 2013 -The NACT Annual Show of Contemporary Art”, The National Art Center, Tokyo,
 Japan. January 23 – April 1
 “Visceral Sensation - Voice So Far, So Near”, 21st Century Museum of Contemporary Art, Kanazawa,
 Ishikawa Pref., Japan. April 27 – September 1
 “AICHI TRIENNALE 2013: Awakening”, Okazaki CIBICO, Aichi, Japan. August 10 – October 27

- 2014 “sleeping beauty”, Hiroshima City Museum of Contemporary Art, Hiroshima Pref., Japan. May 17 – July 21
- 2015 “Ocean of Images: New Photography 2015”, The Museum of Modern Art, New York, USA. November 7, 2015 – March 20, 2016
 “In the Wake / Japanese Photographers Respond to 3/11”, Museum of Fine Arts Boston, U.S.A., etc. April 5 – July 12
- 2018 “Building Romance”, Toyota Municipal Museum of Art, Aichi Pref., January 20 – April 8

Awards

- 2005 Jurors Award (Selected by Michiko Kasahara), “MiO Photo Award 2005”
- 2008 “The 33rd Kimura Ihei Commemorative Photography Award” (Lilly, CANARY)
- 2009 Young Photographer Award, “ICP Infinity Awards”
- 2012 New Photographer Award, “The 28th Higashikawa Awards”
- 2013 Sagamihara Photo Award, “Photo City Sagamihara Awards 2013”
 “The 24th Takashimaya Art Award”
- 2017 “The 2nd Prix Pictet Japan Award”

Events

Artist Talk: Shiga Lieko (in Japanese)

Date and Time: March 10, 2019 (Sun.) 14:00–16:00

Venue: 1F Hall, Tokyo Photographic Art Museum

Number of participants: up to 190 *Numbered tickets will be distributed at the 1F general reception desk from 10:00 on the day

Workshop: One Stone (in Japanese)

For this workshop, each participant should pick up ‘one stone’ to bring with them and then talk about.

Date and time: March 21, 2019 (Thu., public holiday) 14:30–17:30 (tentative)

Number of participants: up to 20, application to be made in advance. *Instructions for application to be published later on the museum’s website.

Philosophy Cafe ‘Human Spring’ (in Japanese)

1st event: April 13, 2019 (Sat.), considering the ‘human’ from the exhibition

2nd event: April 27, 2019, (Sat.) considering the ‘spring’ from the exhibition

Date and time: 14:00–17:00 (both events)

Seating capacity: 50 for each event. *applications to be made in advance.

The Philosophy Cafe is an event in which we focus on things that are generally accepted without second thought, stepping back and asking what in fact they really are, then experiencing the difficulty and fun of strengthening one's personal opinions through discussion.

For this exhibition we will consider two themes together with the participants.

Facilitator: NISHIMURA Takahiro (Philosophy Café@Sendai)

Facilitation Graphic: KONDA Mamiko (Philosophy Café@Sendai)

Gallery Talk by the Production Team (in Japanese)

March 6, 2019 (Wed.) 16:00 –

Members of the team that created the work will give an explanation of the exhibit.

Gallery Talk by the exhibition curator (in Japanese)

The curator will provide explanatory talks on the exhibits from 14:00, every 2nd and 4th Friday of the month during the course of the exhibition. Please gather at the entrance of the 2nd floor gallery with a current exhibition ticket (date-stamped for that day)

Outline of Exhibitions

Shiga Lieko: Human Spring

Dates: March 5 (Tue.) – May 6 (Mon. national holiday), 2019

Venue: Tokyo Photographic Art Museum 2F Gallery

Organized by: Tokyo Photographic Art Museum/Tokyo Shimbun

Supported by: Nikon Corporation/Nikon Imaging Japan/Toppan Printing Co. Ltd.

In cooperation with: Color Science Labo/ Ishidoh Construction Co. Ltd.

Open Hours: 10:00–18:00 (Thu./Fri. 10:00–20:00) *Final admission 30 minutes before closing

Museum Closed: Every Monday *the museum is open Mondays for national holidays but will close the following Tuesday

Admission Fee: Adults ¥700 (560), Students ¥600 (480), Junior and Senior High School Students/People aged 65 or over ¥500 (400)

*Admission is free for grade school children or younger, junior high school students living or attending schools in the Tokyo metropolitan area and those with handicapped person's passbook together with their carers

*People aged 65 or over are free on the third Wednesday of each month.



Human Spring 2018 Collection of the Artist

©Lieko Shiga

For further information concerning this press release, please contact:

東京都写真美術館

TOKYO PHOTOGRAPHIC ART MUSEUM

Yebisu Garden Place, 1-13-3 Mita, Meguro-ku, Tokyo, 153-0062, Japan

Tel 03-3280-0034 Fax 03-3280-0033 www.topmuseum.jp

ExhibitionCurators

NIWA Harumi / h.niwa@topmuseum.jp

TAKEUCHI Atsuko / a.takeuchi@topmuseum.jp

Public Relations / press-info@topmuseum.jp